
Jet

You'll like this versatile multi-use chair for all it offers. Fully-optioned stack, task, stool models are part of the family - as well as a tablet arm and book rack option. It's ergonomically-contoured polypropylene shell provides durable performance and flexible comfort. With a wide range of colors and choices, Jet can fit in almost anywhere.



Jet



Jet Stacker



Jet Stacker | UPHOLSTERED SEAT AND BACK



Jet Task | UPHOLSTERED SEAT AND BACK



Jet Task | UPHOLSTERED SEAT



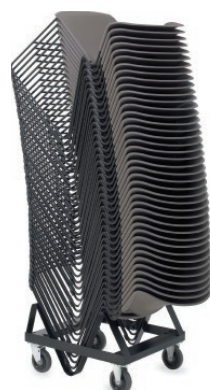
Jet | TABLET ARM + BOOK RACK



Jet Stool | DRAFTING HEIGHT, UPHOLSTERED SEAT



Jet | CAFE STOOL



Optional cart for Jet Stacker
Stacks 40-high for poly models and 10-high for upholstered models.

DETAILS

- Ergonomically contoured seat and back.
- Durable polypropylene shell available in twelve colors.
- Optional upholstered pads – 1/2"-thick foam back and 3/4"-thick seat pad – look good and feel great.
- Sturdy yet stylish steel frame in standard Black or Platinum.

JET STACKER AND CAFE STOOL

- Stacks or stores simply.
- Solid steel frame comes in three finishes – standard Black, Platinum, or Chrome.

JET TASK

- Optional solid steel T-Arms enhance comfort.
- Choose from two easy-to-use mechanisms:
 - Basic Task, with fixed back and pneumatic seat height adjustment.
 - Swivel Tilt, with fixed back, pneumatic seat height adjustment and tilt tension control with one position lock.

JET STOOL

- Choose from intermediate and drafting height.
- Optional solid steel T-Arms enhance comfort.

