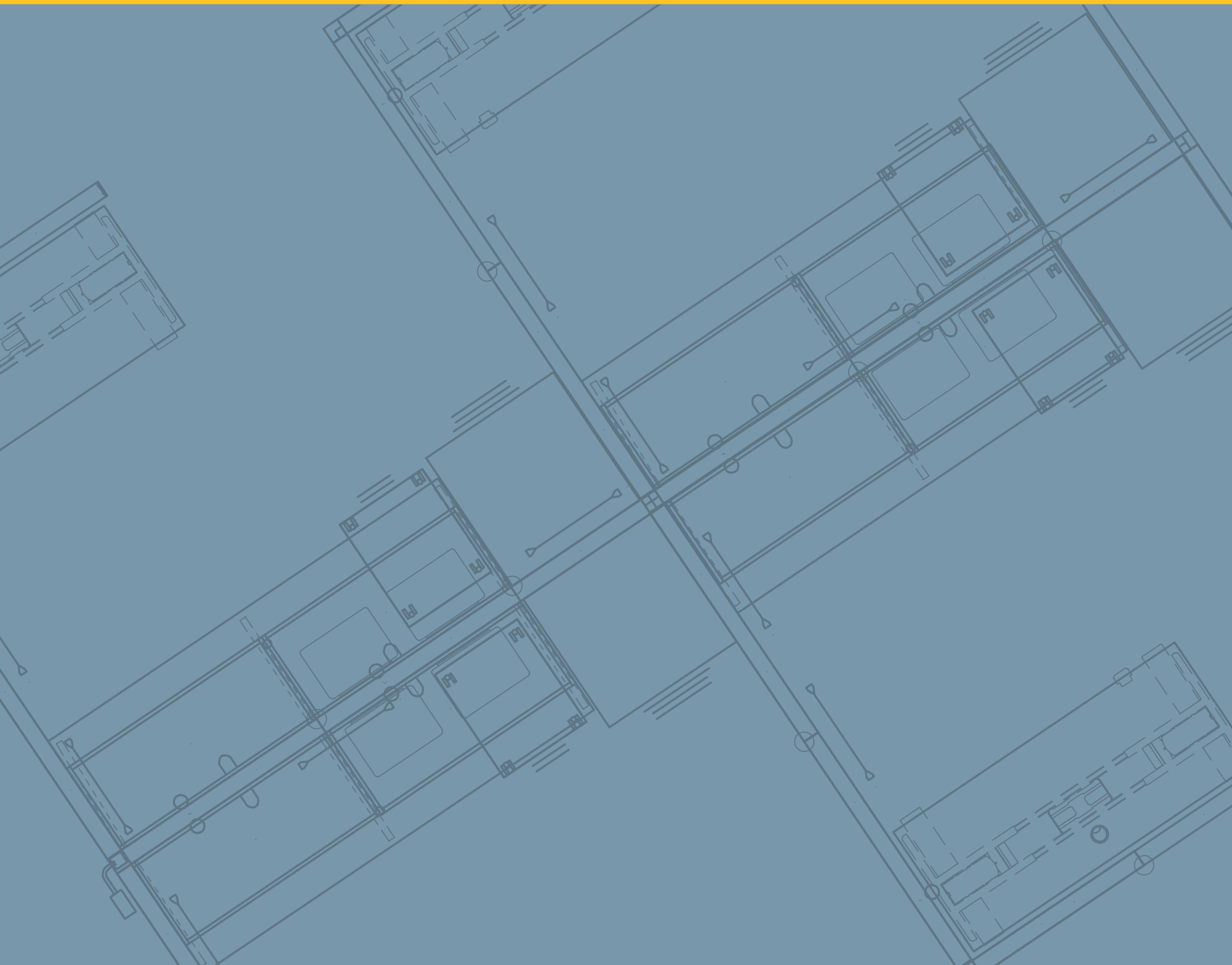


# Everyday Workstation Typicals



## PRACTICAL SOLUTIONS, DEPENDABLE SERVICE

---

For over 50 years, we've been in the business of creating comfortable, affordable, and safe workspaces that are delivered on time, every time. We know that relocating or renovating office space is an exciting but sometimes daunting experience. You need to move quickly, provide your team with a space that will help them thrive at work, and do it on a budget.



This planning guide utilizes a variety of our most popular real life systems idea starters. Each accommodate a range of work styles with flexible solutions that adapt to change over time.

It's a great place to jump start your next project. Let's get started.



Workstations

Capture® Introduction	pages 4-5
Capture Workstations	pages 6-9
Choices® Introduction	pages 10-11
Choices Workstations	pages 12-15

Surface Materials

Standard and Scheduled	pages 16
Palette Inspirations	pages 17

Fast Facts	page 18
------------	---------





## CAPTURE

---

Capture is a versatile, full-featured frame and tile system. It's clean lines, crisp details, and smart storage are ideal for today's work environments. Capture is exceptionally easy to plan, install, and reconfigure.





- **Self-Aligning Tiles** with secure clips and locking magnets ensure a clean look
- **Framed Fabric Tiles** are built with a solid frame for greater strength and faster set up
- **Simple Connections** keeps install fast without tools – just click in place
- **Power and Data** access at the beltline or base
- **Multiple Options** and design possibilities



Capture Beltway Power



Capture Laminate Tile



Capture Slatwall Tile



Capture Frameless Glass Screen



Capture Marker Board Tile

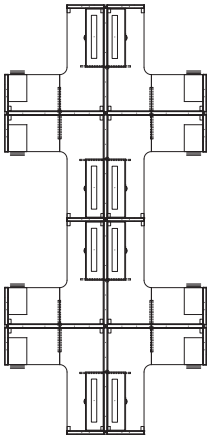


Capture Bottom Open Tile Option



## CAPTURE TYPICAL 1

---



**Product: Capture® and Pack Filing**

Number of Stations: 8

Panel Height: 66" High

Size: 6.5' x 7'

Tiling: 16" Glass stackers, monolithic tiling

Power: Down the spine in the raceway

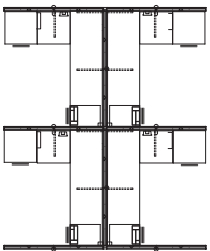
Privacy: Medium

List Price: \$71,970

Price Per Station: \$8,996

## CAPTURE TYPICAL 2

---



**Product: Capture® and Pack Filing**

Number of Stations: 4

Panel Height: 50" High

Size: 6' x 7'

Tiling: Monolithic tiling on interior, segmented tiling on exterior

Power: Down the spine in the raceway, desktop power accessory

Privacy: Medium

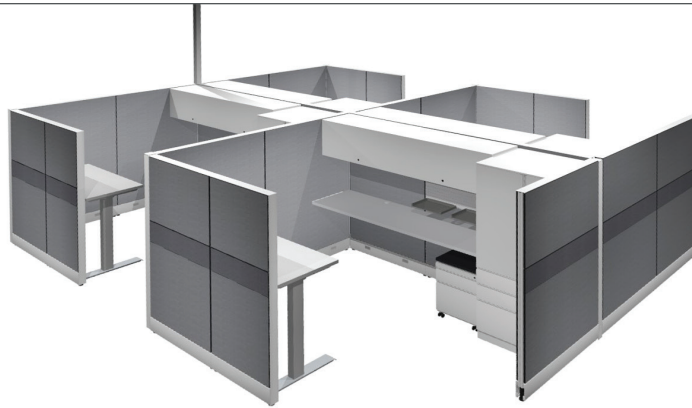
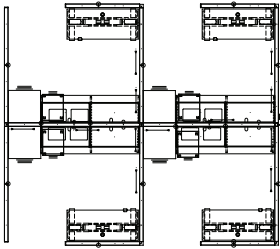
List Price: \$45,405

Price Per Station: \$11,351



## CAPTURE TYPICAL 3

---



**Product: Capture® Rejuve® HAT, and Pack Filing**

Number of Stations: 4

Panel Height: 66" High

Size: 7' x 8'

Tiling: Monolithic interior with work tools, segmented tiling on exterior

Power: In the raceway

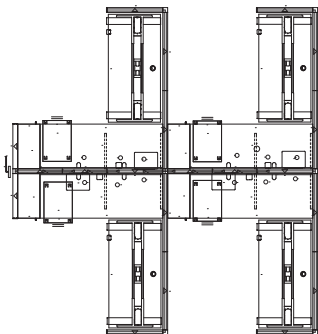
Privacy: Medium to High

List Price: \$63,462

Price Per Station: \$15,866

## CAPTURE TYPICAL 4

---



**Product: Capture® Rejuve® HAT, and Pack Filing**

Number of Stations: 4

Panel Height: 50" High, with 16" Frameless glass

Size: 6.5' x 7'

Tiling: Monolithic interior with work tools, segmented laminate tiling on exterior

Power: In the raceway on the spine

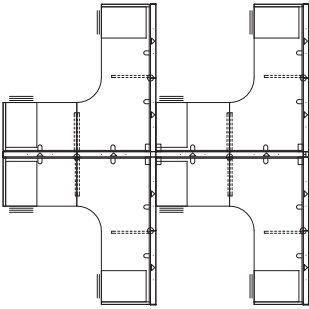
Privacy: Medium

List Price: \$50,409

Price Per Station: \$12,602

## CAPTURE TYPICAL 5

---



**Product: Capture® with Pack Filing**

Number of Stations: 4

Panel Height: 50" High

Size: 6' x 6'

Tiling: Monolithic

Power: In the raceway on the spine

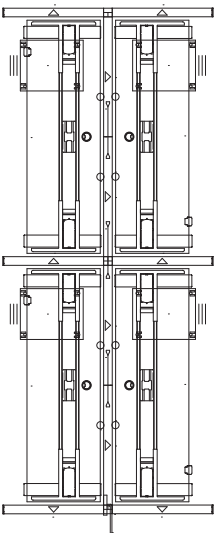
Privacy: Low

List Price: \$25,072

Price Per Station: \$6,268

## CAPTURE TYPICAL 6

---



**Product: Capture®, Rejuve® HAT, Pack Filing**

Number of Stations: 4

Panel Height: 50" High

Size: 2.5' x 6'

Tiling: Monolithic on interior, segmented on exterior

Power: In the raceway on the spine

Privacy: Low

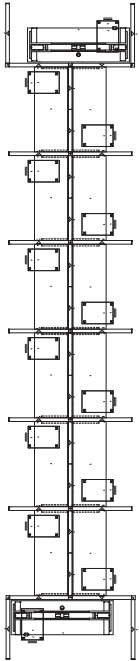
List Price: \$21,172

Price Per Station: \$5,293



## CAPTURE TYPICAL 7

---



**Product: Capture®, Rejuve® HAT, Pack Filing**

Number of Stations: 2 managers stations, 12 staff stations

Panel Height: 50" High

Size: 2.5' x 6'

Tiling: 16" Glass stackers, Monolithic

Power: In the raceway on the spine

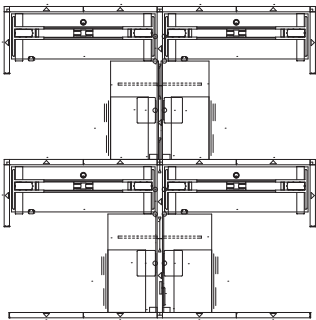
Privacy: Low

List Price: \$71,387

Price Per Station: \$5,099

## CAPTURE TYPICAL 8

---



**Product: Capture®, Rejuve® HAT, Pack Filing**

Number of Stations: 4

Panel Height: 50" High

Size: 6' x 6'

Tiling: Segmented with work tools

Power: In the raceway on the spine

Privacy: Medium to Low

List Price: \$37,766

Price Per Station: \$9,442

## CHOICES

---

The Choices system brings proven quality and high-performance solutions to the workplace. It delivers a wide array of functional design solutions for every work style and preference. Choices integrates seamlessly with other Trendway storage and freestanding products for optimal design and budget flexibility.



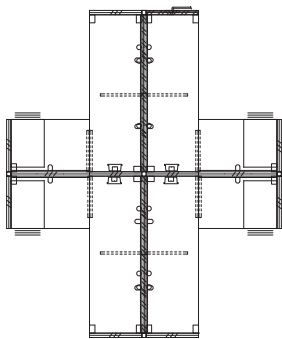


- Superior Panel Strength makes Choices one of the most durable on the market
- Steel Top Caps and Welded Frames with multi-layer fiberglass inserts and aluminum rail.
- Ease of Specification with the simplicity of monolithic tiles
- Panels Ship Complete because they are fully assembled
- Timeless Aesthetic ensures a solid investment



## CHOICES TYPICAL 1

---



### **Product: Choices® with Pack Filing**

Number of Stations: 4

Panel Height: 48" High

Size: 5' x 6'

Panel Description: Half glass panel with 12" glass

Power: In the raceway on the spine, desktop power accessory

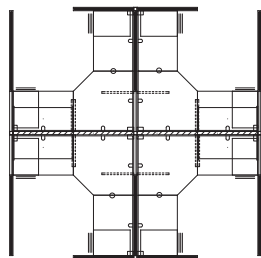
Privacy: Low

List Price: \$28,801

Price Per Station: \$7,200

## CHOICES TYPICAL 2

---



### **Product: Choices® with Pack Filing**

Number of Stations: 4

Panel Height: 66" and 54" High

Size: 6' x 6'

Panel Description: Tackable acoustical panel with 12" frameless screen

Power: In the raceway on the spine, desktop power accessory

Privacy: Medium

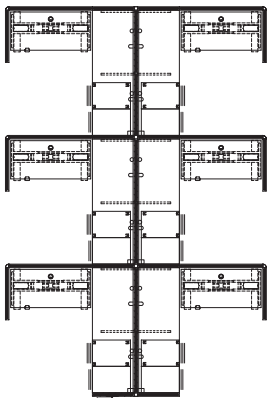
List Price: \$34,203

Price Per Station: \$8,551



## CHOICES TYPICAL 3

---



**Product: Choices®, Rejuve® HAT, Pack Filing**

Number of Stations: 6

Panel Height: 48"

Size: 6' x 6'

Panel Description: Tackable acoustical panel with 12" frameless screen

Power: In the raceway on the spine

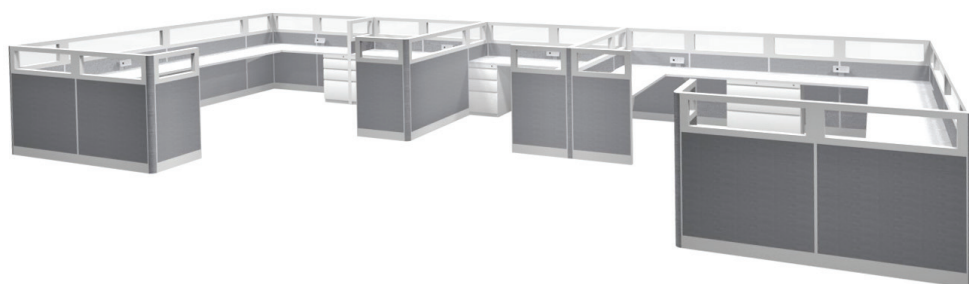
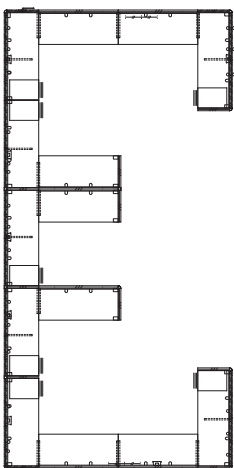
Privacy: Low to Medium

List Price: \$55,610

Price Per Station: \$9,268

## CHOICES TYPICAL 4

---



**Product: Choices®, Rejuve® HAT, Pack Filing**

Number of Stations: 7

Panel Height: 48"

Size: 6' x 7'

Panel Description: Half glass panel with 12" glass

Power: In the raceway, desktop power accessory

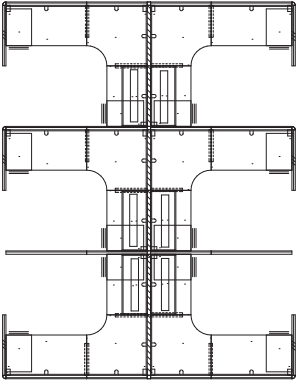
Privacy: Low with collaboration

List Price: \$61,686

Price Per Station: \$8,812

## CHOICES TYPICAL 5

---



**Product: Choices® with Pack Filing**

Number of Stations: 6

Panel Height: 66" H

Size: 6' x 7'

Panel Description: Tackable acoustical panel, half glass wing panels with 18" glass

Power: In the raceway on the spine

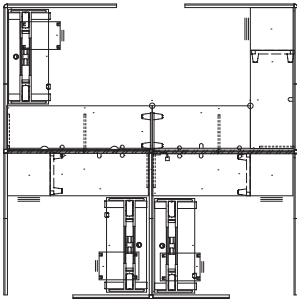
Privacy: Medium to High

List Price: \$55,734

Price Per Station: \$9,289

## CHOICES TYPICAL 6

---



**Product: Choices® Rejuve® HAT, Pack Filing**

Number of Stations: 4

Panel Height: 42" and 66" H

Size: 6.5' x 6.5'

Panel Description: Half glass spine panels with 24" glass, tackable acoustical dividing panels

Power: In the raceway on the spine

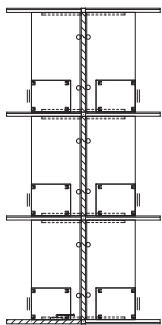
Privacy: Low

List Price: \$37,385

Price Per Station: \$9,346

## CHOICES TYPICAL 7

---



**Product: Choices® with Pack Filing**

Number of Stations: 6

Panel Height: 54"

Size: 4' x 6'

Panel Description: Tackable acoustical panels

Power: In the raceway on the spine

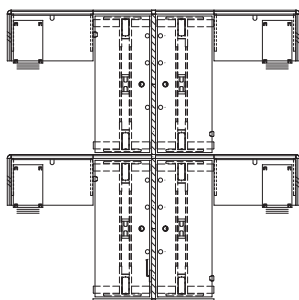
Privacy: Low

List Price: \$18,411

Price Per Station: \$3,069

## CHOICES TYPICAL 8

---



**Product: Choices®, Rejuve® HAT, Pack Filing**

Number of Stations: 4

Panel Height: 54"

Size: 6' x 6'

Panel Description: Tackable acoustical panel, half glass wing panels with 12" glass

Power: In the raceway on the spine

Privacy: Low to Medium

List Price: \$29,523

Price Per Station: \$7,381



# SURFACE MATERIALS

Once you’ve landed on the right layout it’s time to select your finishes. When it comes to your office, the right style is important. That’s why Trendway has thousands of fabrics and finishes to choose from. If that sounds overwhelming, or you’re pressed for time, we’ve got a simple answer: our Standard Materials Offering. Affordable and easy to specify, your order ships within 2-4 weeks.

Explore our full line of surface materials at [Trendway.com/surface-materials/library/](https://Trendway.com/surface-materials/library/)

Standard Materials	Scheduled Materials
<ul style="list-style-type: none"><li>• Reliable 2-4 week lead-time*</li><li>• Backed by supplier agreements</li><li>• All memo samples stocked in Trendway fulfillment</li><li>• Swatch cards for panel and seating fabrics available</li></ul>	<ul style="list-style-type: none"><li>• Lead-time determined at time of order</li><li>• Includes graded-in materials</li><li>• Fabric samples provided by supplier</li><li>• More colors, patterns, and price points when needed</li><li>• Fabric swatch cards not available</li><li>• COM is available</li></ul>

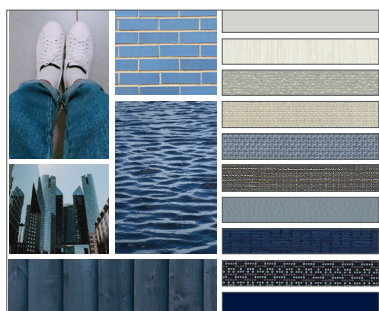
*\*Most orders average 2-4 weeks, but reference Trendway’s lead-time guide for some products that may take longer.*



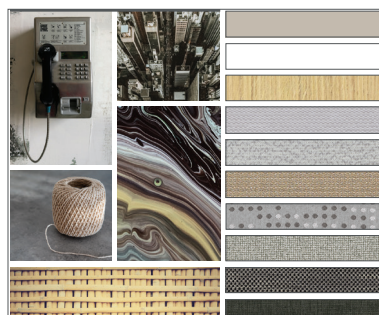
Finally, a color palette with your name on it. We have nine carefully selected color palettes from our standard material offering to get your creative ideas flowing. These palettes are soft, expressive, and perfectly suited for the space you have in mind. Our wide-ranging collection coordinates across all of Trendway's product lines. Designing a full office solution is simple with Trendway.



### DENIM BLUE



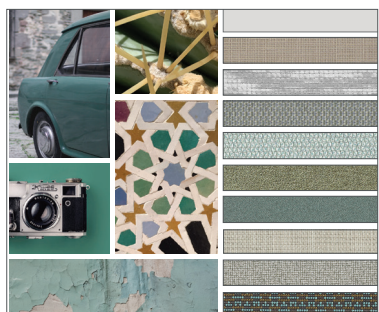
### COZY CONTEMPORARY



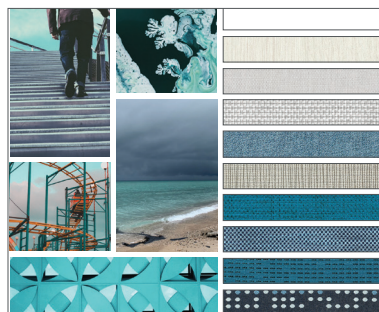
### HELLO MELLOW



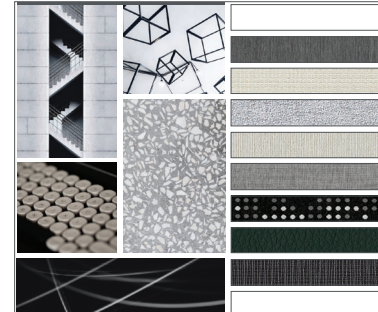
### SERENE GREEN



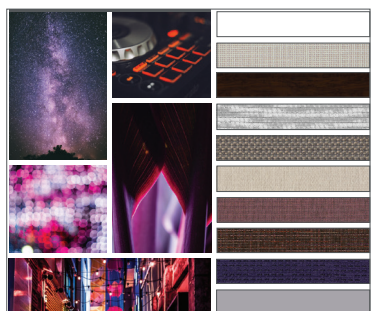
### GREAT LAKE



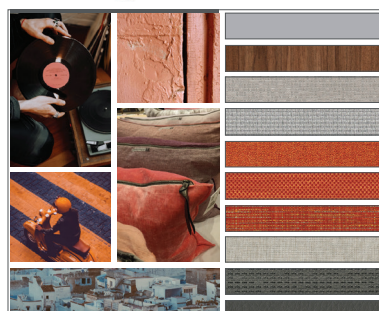
### OPPOSITES ATTRACT



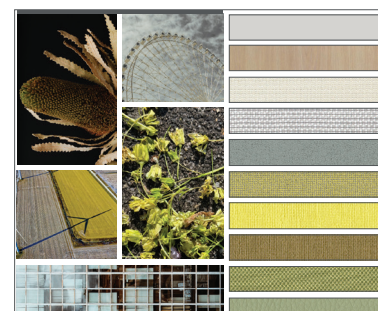
### GALACTIC GROOVE



### 10ROCCAN MOMENTS



### SPROUTED GREENS



## FAST FACTS

- 500,000 square feet of manufacturing space in the U.S.
- Buy American Act (BAA) and /or Trade Agreement Act (TAA) compliant
- Government contract holder for over 30 years
- \* OMNIA Partners contract holder
- Premier contract holder
- Fast 10-day average lead time
- 99.99% on time and complete shipments record
- Limited lifetime warranty
- ISO9001-2015 certified
- BIFMA compliant participant
- ANSI/BIFMA tested products
- Superior safety record
- Committed to continuous improvement
- SCS Indoor Advantage certification
- Skilled technical support







---

# Trendway >

**Fellowes**  
Brands.



Most Trendway products conform to the ANSI/BIFMA e3-2014e level® Furniture Sustainability Standard. Visit our website to view current certifications for specific products. Trendway Products are tested for conformance to SCS Indoor Advantage™ or Indoor Advantage Gold™ requirements. Visit our website to view current certifications for specific products.