

---

Less is More Materials

# LESS IS MORE PANEL FABRIC

## GRADE 0

### Framework

KK0 Capri  
KK1 Cappuccino  
BJ7 Dove Gray  
KK2 Espresso  
B4Y Eucalyptus  
KJY Fresco  
B4X Gray Blue  
KJX Grotto  
BFP Hunter  
BFR Marble  
BG7 Sand  
B4V Sandy Pebble  
BG8 Twilight

### Merge

Z42 Dove  
Z43 Driftwood  
Z44 Eucalyptus  
Z45 Fawn  
Z46 Fire Engine  
Z47 Graphite  
Z48 Graystone  
Z49 Green Apple  
Z4A Ivy  
Z4C Mandarin  
Z4D Marshmallow  
Z4E Mediterranean  
Z4F Midnight  
Z4G Silver Lining  
Z4H Slate  
Z4J Taupe

## GRADE 2

### Tabby Weave

Z21 Baltic  
QQ3 Cement Mix  
175 Crystal Blue  
Z22 Eggshell  
238 Grey Mix  
QS0 Lake  
K99 Medium Gray  
Z23 Opal  
BV2 Silver Papier  
QT8 Stream  
Z24 Ultramarine  
150 Wedgewood

## GRADE 3

### Anchorage

BF7 Amber  
AR1 Angora  
AR0 Asteroid  
BF4 Aubergine  
AQ8 Birch  
BF9 Cobalt  
BFK Coffee Bean  
AQ4 Cumin  
AQ7 Deep Water  
AQ3 Eucalyptus  
KWX Fern  
AR3 Fossil  
BF3 Geranium  
BF8 Goldenrod  
AQ9 Goose  
BFM Graphite  
BFF Green Apple  
AQ2 Green Olive  
AR2 Henna  
BFA Lapis  
KWY Lemon  
BXN Magenta  
BFD Midnight  
BF5 Mulberry  
GEB Onyx  
KX0 Orchid  
BFH Pine Needle  
KX1 Pool  
BF6 Poppy  
BF2 Pumpkin  
AQ6 Quarry Blue  
BFN Red Delicious  
BFE Sea  
AQ5 Slate  
B9P Straw  
BF1 Sunshine  
BFC Thistle  
KX2 Turquoise  
AQ1 Vanilla  
BXP Waterfall  
BFG Willow  
BFJ Wolf



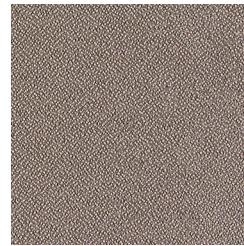
Dove Gray - BJ7



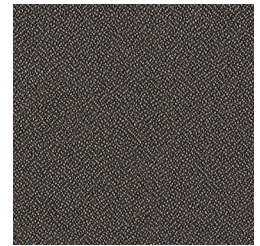
Grotto - KJX



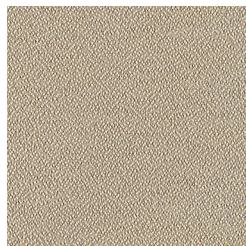
Fresco - KJY



Cappuccino - KK1



Espresso - KK2



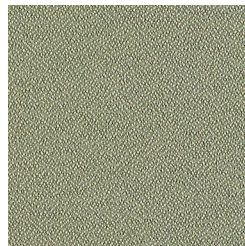
Sandy Pebble - B4V



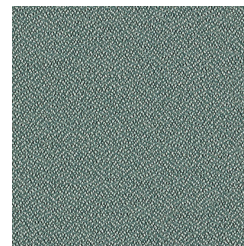
Sand - BG7



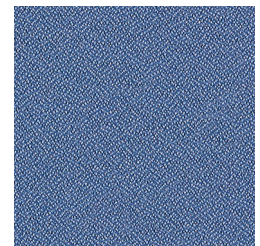
Capri - KKO



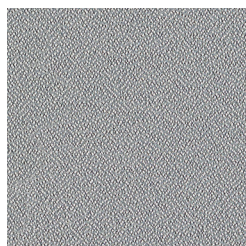
Eucalyptus - B4Y



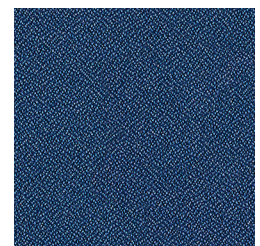
Hunter - BFP



Marble - BFR



Gray Blue - B4X



Twilight - BG8



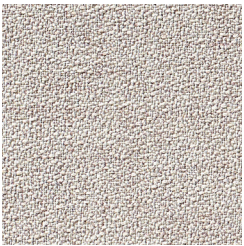
Dove - Z42



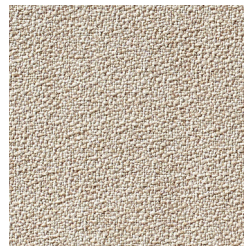
Silver Lining - Z4G



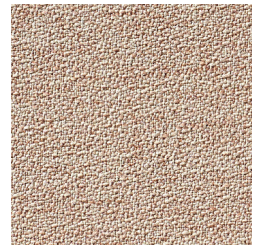
Marshmallow - Z4D



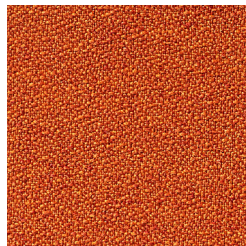
Driftwood - Z43



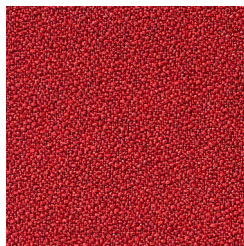
Fawn - Z45



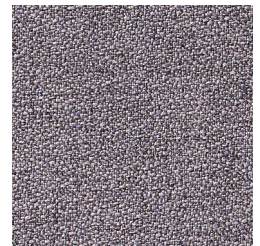
Taupe - Z4J



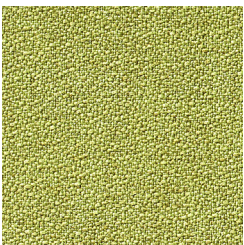
Mandarin - Z4C



Fire Engine - Z46



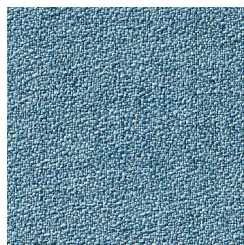
Graystone - Z48



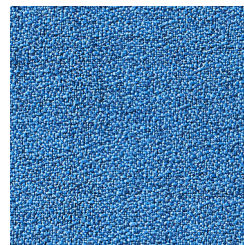
Green Apple - Z49



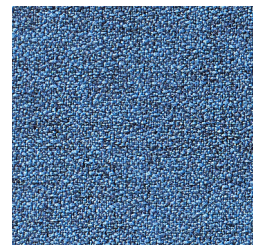
Ivy - Z4A



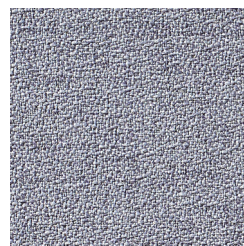
Eucalyptus - Z44



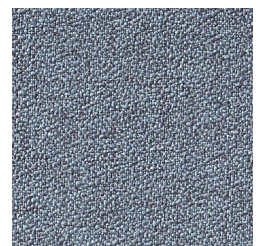
Mediterranean - Z4E



Midnight - Z4F



Graphite - Z47



Slate - Z4H



Eggshell - Z22



Silver Papier - BV2



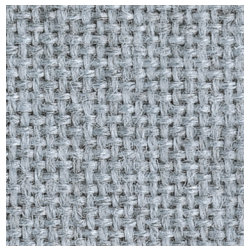
Opal - Z23



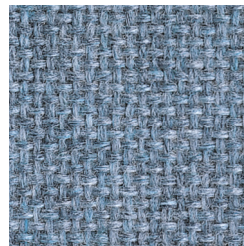
Stream - QT8



Cement Mix - QQ3



Crystal Blue - 175



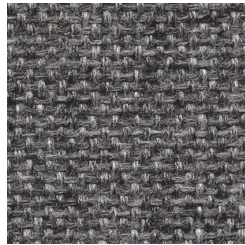
Wedgewood - 150



Lake - QS0



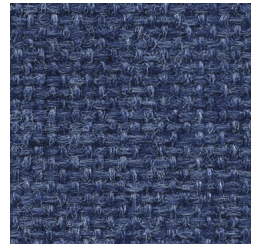
Gray Mix - 238



Medium Gray - K99



Ultramarine - Z24



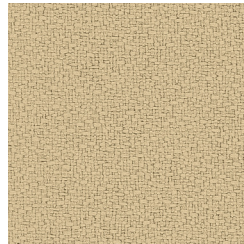
Baltic - Z21

**ANCHORAGE** Grade 3 - Panel Fabric

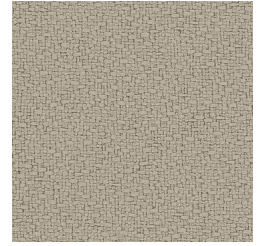
**Trendway** >



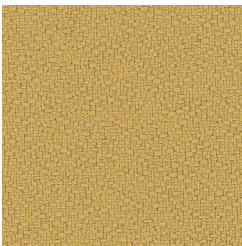
Birch - AQ8



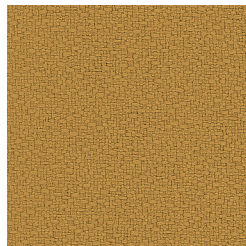
Vanilla - BFE



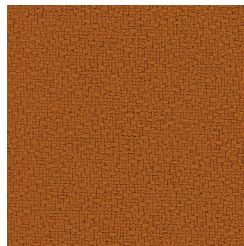
Angora - AR1



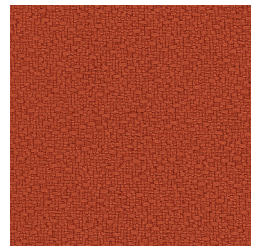
Straw - B9P



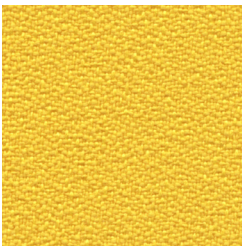
Goldenrod - BF8



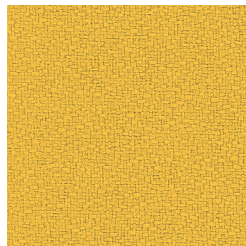
Amber - BF7



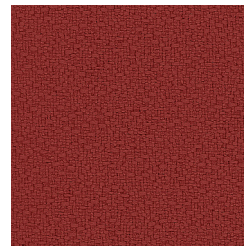
Pumpkin - BF2



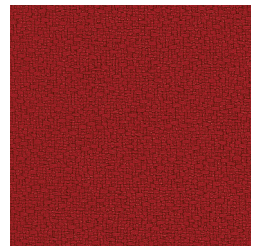
Lemon - KWY



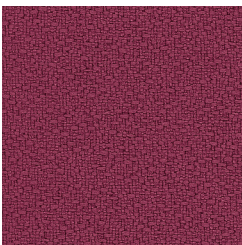
Sunshine - BF1



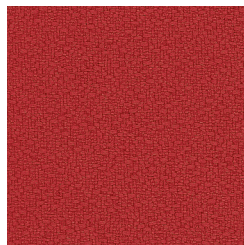
Poppy - BF6



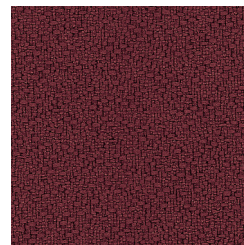
Red Delicious - BFN



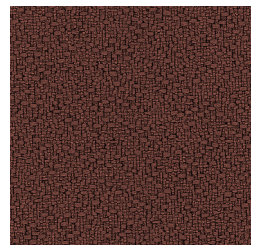
Magenta - BXN



Geranium - BF3



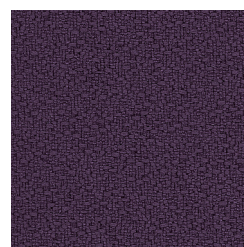
Mulberry - BF5



Henna - AR2



Orchid - KX0



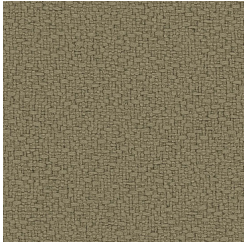
Aubergine - BF4



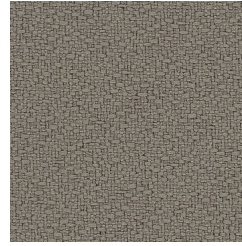
Coffee Bean - BFK

**ANCHORAGE** Grade 3 - Panel Fabric

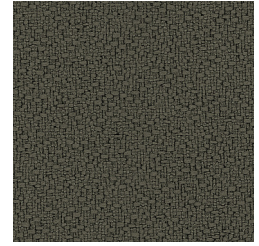
**Trendway** >



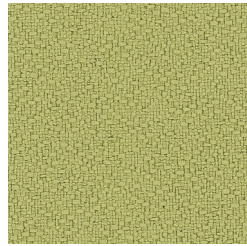
Cumin - AQ4



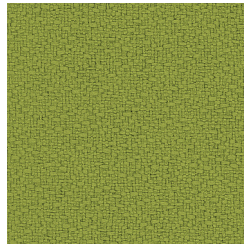
Goose - AQ9



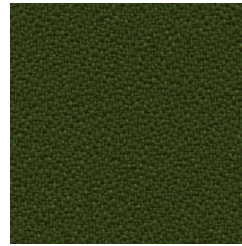
Fossil - AR3



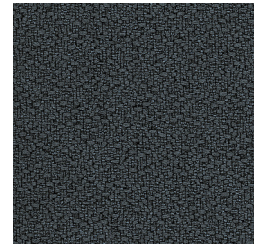
Green Olive - AQ2



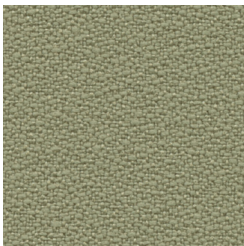
Green Apple - BFF



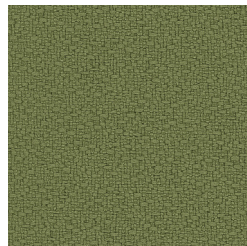
Fern - KWX



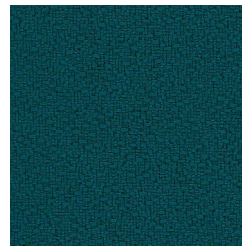
Graphite - BFM



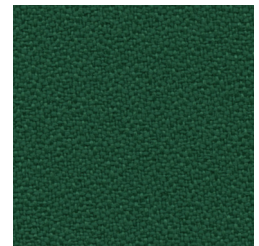
Eucalyptus - AQ3



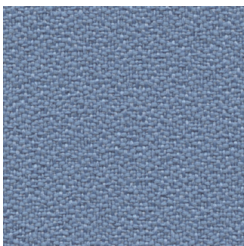
Willow - BFG



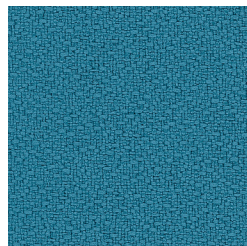
Sea - BFE



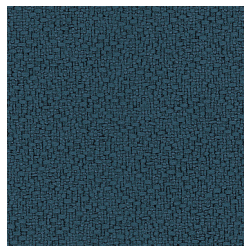
Turquoise - KX2



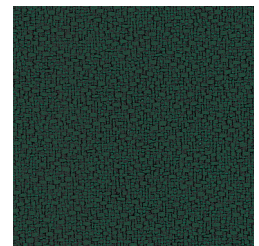
Pool - KX1



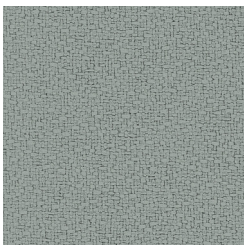
Waterfall - BXP



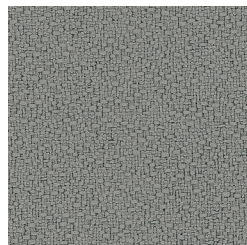
Deep Water - AQ7



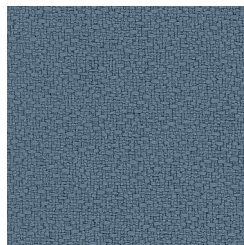
Pine Needle - BFH



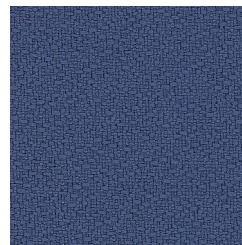
Slate - AQ5



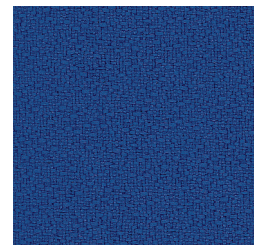
Asteroid - ARO



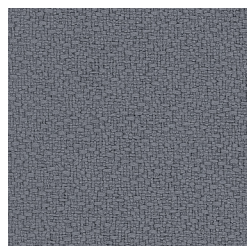
Quarry Blue - AQ6



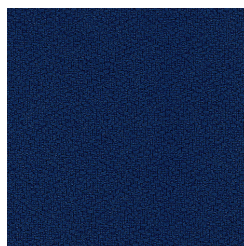
Thistle - BFC



Lapis - BFA



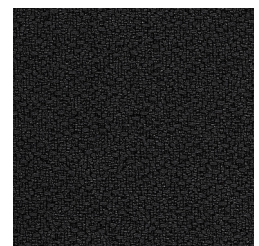
Wolf - BFJ



Cobalt - BF9



Midnight - BFD



Onyx - GEB

# LESS IS MORE SYSTEMS & FREESTANDING FINISHES

## GLAZING

### Plexiglass

01 Clear  
E3A Frost

### Tempered Glass\*

03 Clear  
05 Frost (Frameless Screen)

### 3form® Ecoresin®\*

E02 Solo Aqua Supermatte  
E01 Solo Supermatte  
E03 Spider

## PAINT

### Smooth

K Charcoal  
DW Designer White  
G Gray  
L Light Gray  
PA Platinum\*  
Y Sand  
J Stucco

### Textured

TK Textured Charcoal  
TDW Textured Designer White  
TG Textured Gray  
TL Textured Light Gray  
TY Textured Sand  
TJ Textured Stucco

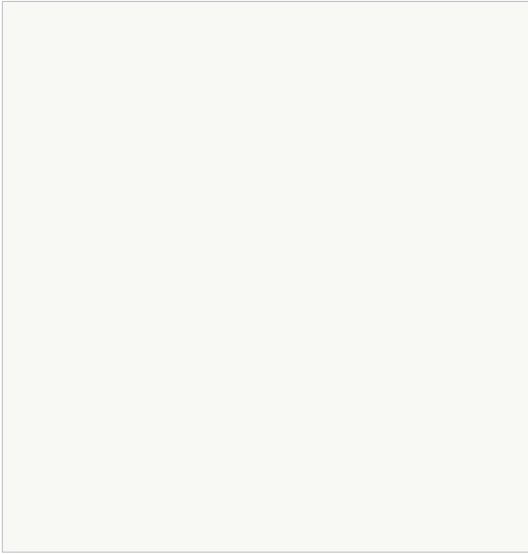
### Frost

Frost finishes have a matte finish with metallic highlights.

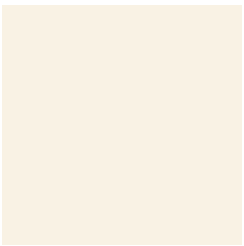
FK Frost Charcoal\*  
FDW Frost Designer White\*  
FG Frost Gray\*  
FL Frost Light Gray\*  
FY Frost Sand\*  
FJ Frost Stucco\*

\* Upcharges apply. Refer to current price list for details.

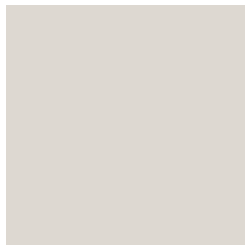




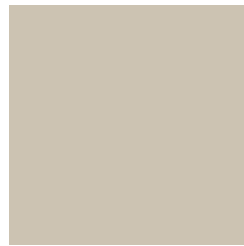
Designer White - DW | TDW | FDW



Stucco - J | TJ | FJ



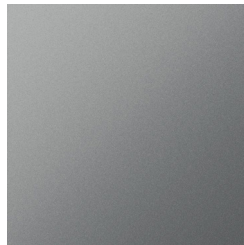
Light Gray - L | TL | FL



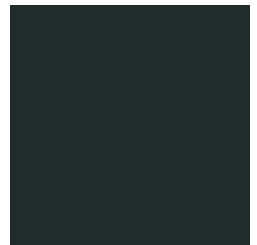
Sand - Y | TY | FY



Gray - G | TG | FG



Platinum - PA



Charcoal - K | TK | FK

# LESS IS MORE LAMINATE

## EDGE BANDING

### Solid Color

K	Charcoal
E1	Designer White
E6	Graphite
G	Gray
L	Light Gray
PA	Platinum
Y	Sand
E7	Shadow
E2	Slate Grey
J	Stucco

### Patterned

E8	Casual Linen
E9	Classic Linen
EB	Crisp Linen
EJ	White Twill
ED	Neutral Twill
EE	Sarum Twill
EG	Earthen Twill
EH	Graphite Twill

### Woodgrain

W8	Beigewood
WE	Brazilwood
W7	Empire Mahogany
J98	Finnish Oak
W5	Fusion Maple
J9C	Phantom Charcoal
J9B	Phantom Ecru
J9A	Phantom Pearl
J99	Walnut
W6	Wild Cherry

## STANDARD HIGH PRESSURE

### Solid Color | Grade 1

583	Charcoal
J0C	Designer White
J9D	Graphite
520	Gray
573	Light Gray
J20	Sand
J04	Shadow
J08	Slate Grey
J11	Stucco

### Patterned | Grade 1

J6B	Casual Linen
J6A	Classic Linen
J69	Crisp Linen
J9H	Earthen Twill
JM4	Evening Tigris
J9J	Graphite Twill
JL6	Green Tigris
JP9	Natural Tigris
J9F	Neutral Twill
J9G	Sarum Twill
551	Stipple Graphite
553	Stipple Gray
J09	White Tigris
J9E	White Twill

### Woodgrain | Grade 1

J0G	Beigewood
J0D	Brazilwood
J2A	Empire Mahogany
J98	Finnish Oak
J25	Fusion Maple
J99	Walnut
J1R	Wild Cherry

## SURFACE TRENDS HIGH PRESSURE

### Nevamar | Grade 1

J3V	Calm Distinction
J3W	Cool Chic
J0F	Cordial Gray
JD5	Crown Cherry
J3U	Easy Elegance
J45	Illustrious Maple
K15	Kopi Susu
J47	Legendary Teak
J48	Luminary Teak
J49	Recon Oak
K17	Regency Mahogany
JF1	Stipple Birch
K16	Stipple Storm
J46	Stipple Straw
J40	Vous Fawn
J43	Vous Metal
J42	Vous Serene
J44	Vous Tempest
K18	Wrought Iron
K19	Yunnan

### Pionite | Grade 1

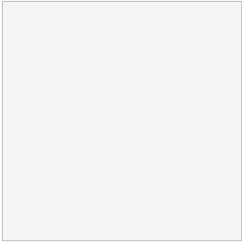
J3D	Appears Likatre
J3H	Cavalacade South
J3M	Cubicle Papel
J3K	Gold Pannin
J1X	Honey Maple
J3A	Leave Likatre
J39	Looks Likatre
J3G	Negotiating in Geneva
J3R	Passin Thru
J3C	Seems Likatre
J3T	Spice Walnut
J3J	Travelin Light
J3E	Vanilla Fiber
J3F	Wheat Fiber

### Wilsonart | Grade 1

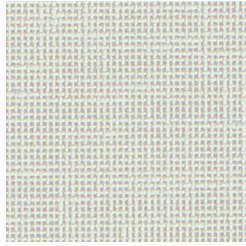
J33	Antique Brush
J1A	Canyon Zephyr
J15	Carbon Evolv
J1P	Cloud Nebula
J1D	Desert Zephyr
J1C	Loden Zephyr
J1B	Misted Zephyr
J1N	Navy Legacy
J14	Nickel Evolv
J32	Pewter Brush
J12	Silicon Evolv
J13	Titanium Evolv
J16	Tungsten Evolv
J1E	Twilight Zephyr
J17	Windswept Bronze
J18	Windswept Pewter

# HIGH PRESSURE LAMINATE Standard

Trendway >



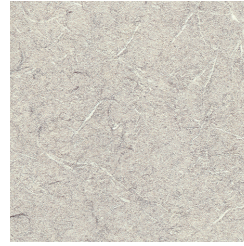
Designer White - JOC



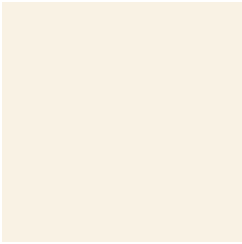
Crisp Linen - J69



Neutral Twill - J9F



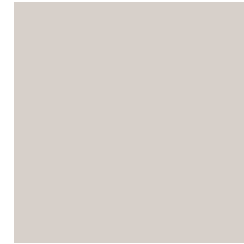
White Tigris - J09



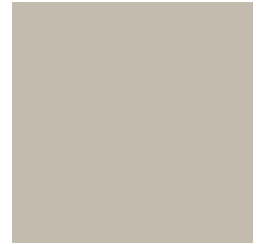
Stucco - J11



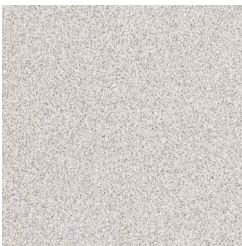
White Twill - J9E



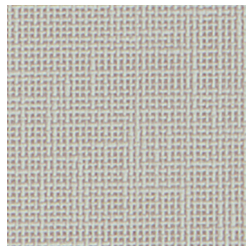
Light Gray - 573



Sand - J20



Stipple Gray - 553



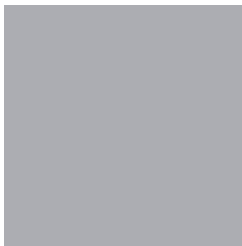
Classic Linen - J6A



Sarum Twill - J9G



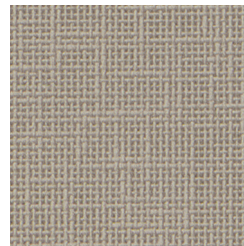
Natural Tigris - JP9



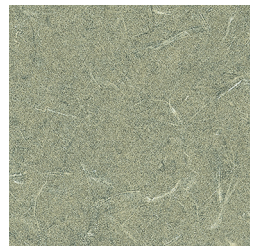
Gray - 520



Shadow - J04



Casual Linen - J6B



Green Tigris - JL6



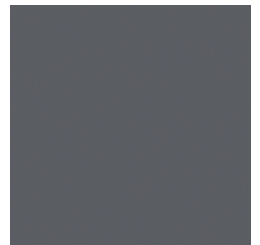
Earthen Twill - J9H



Evening Tigris - JM4



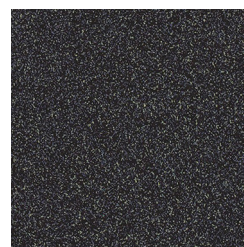
Slate Grey - J08



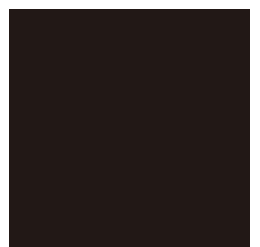
Graphite - J9D



Graphite Twill - J9J



Stipple Graphite - 551



Charcoal - 583

**HIGH PRESSURE LAMINATE** Standard

Trendway >



Beigewood - JOG



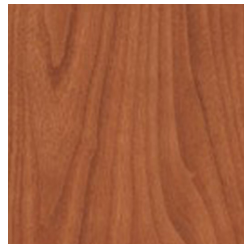
Fusion Maple - J25



Finnish Oak - J98



Brazilwood - J0D



Wild Cherry - J1R



Walnut - J99



Empire Mahogany - J2A

**HIGH PRESSURE LAMINATE** Surface Trends

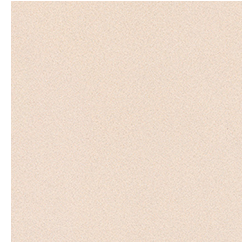
Trendway >



Vanilla Fiber - J3E



Stipple Birch - JF1



Stipple Straw - J46



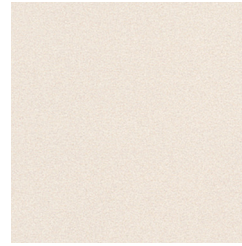
Vous Serene - J42



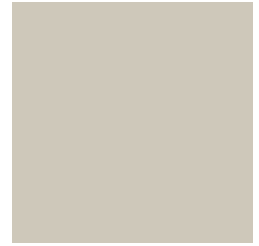
Cool Chic - J3W



Cubicle Papel - J3M



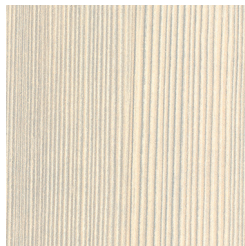
Cavalcade South - J3H



Cordial Gray - J0F



Wheat Fiber - J3F



Leave Likatre - J3A



Desert Zephyr - J1D



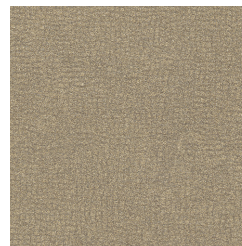
Canyon Zephyr - J1A



Silicon Ev - J12



Travelein Light - J3J



Travelin Light - J3J



Loden Zephyr - J1C



Nickel Ev - J14



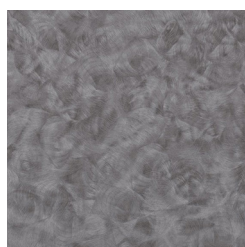
Kopi Susu - K15



Tungsten Ev - J16



Twilight Zephyr - J1C



Pewter Brush - J32



Gold Pannin - J3K



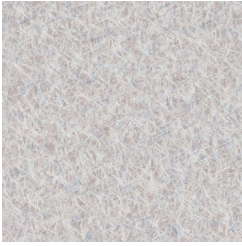
Vous Metal - J43



Passin Thru - J3R

**HIGH PRESSURE LAMINATE** Surface Trends

Trendway >



Titanium Ev - J13



Stipple Storm - K16



Cloud Nebula - J1P



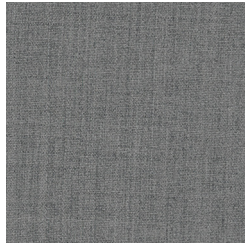
Negotiating in Geneva  
J3G



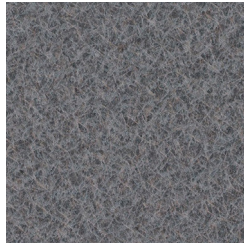
Misted Zephyr - J1B



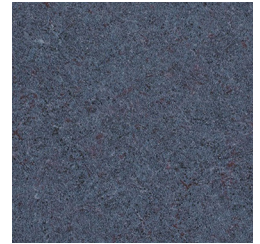
Windswept Pewter J18



Calm Distinction - J3V



Carbon Ev - J15



Navy Legacy - J1N



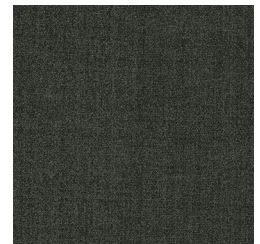
Vous Tempest - J44



Wrought Iron - K18



Yunnan - K19



Easy Elegance - J3U



Looks Likatre - J39



Luminary Teak - J48



Legendary Teak - J47



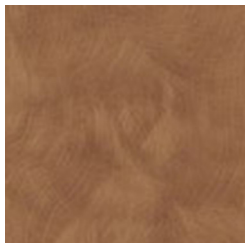
Illustrious Maple - J45



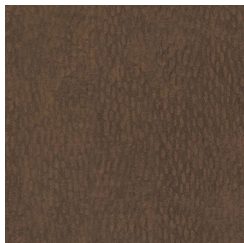
Appears Likatre - J3D



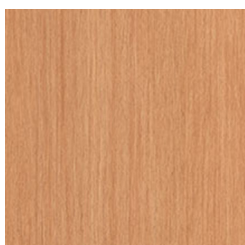
Honey Maple - J1X



Antique Brush - J33



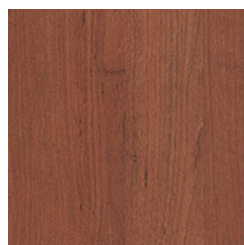
Windswept Bronze J17



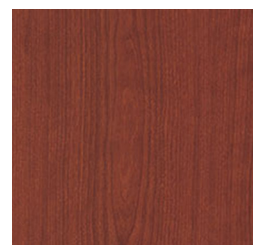
Recon Oak - J49



Seems Likatre - J3C



Spice Walnut - J3T



Crown Cherry - JD5