



Eggshell - Z22



Silver Papier - BV2



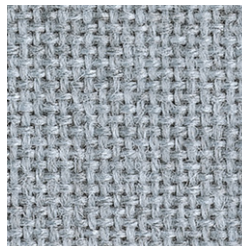
Opal - Z23



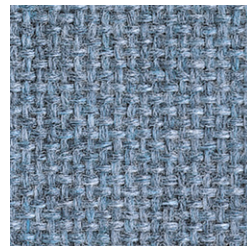
Stream - QT8



Cement Mix - QQ3



Crystal Blue - 175



Wedgewood - 150



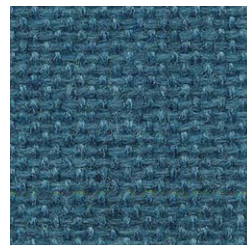
Lake - QS0



Gray Mix - 238



Medium Gray - K99



Ultramarine - Z24



Baltic - Z21

TABBY WEAVE

Application	Consult current price lists for product applications
Grade	2
Pattern	Non-Directional
Content	100% Post-Consumer Recycled Polyester
Weight	16 oz. per linear yard
Width	66"
Colorfastness to Light	40 Hours, Class 4
Colorfastness to Crocking	Grade 4 - Dry, Grade 4 - Wet
Flammability Rating	ASTM E-84, Class 1 or A
UL Listed	Meets UL requirements
Note	Color may vary slightly between manufacturer's dye lots
Care Instructions	To keep fabric from becoming soiled, manufacturer recommends frequent vacuuming or light brushing to remove dirt and grime. Spot clean when necessary with mild solvent, upholstery shampoo or foam from a mild detergent. If the fabric becomes soiled overall, use a professional cleaning service.